



BADGER FARM
Parish Council

Badger Bugle – Issue 2 | December 2021

BADGER FARM PARISH COUNCIL

Newsletter of Badger Farm Parish Council

From the Editor

Welcome to the second edition of the Badger Bugle! We hope this finds you all well and ready for the darker nights ahead. With the safety of our residents in mind, Badger Farm Parish Council has invested money to employ someone to tackle a few of the overgrown paths in the parish.

As you are aware, maintenance of the green spaces in the parish is the responsibility of Winchester City Council and any problems with estate maintenance can be reported to them via their app.

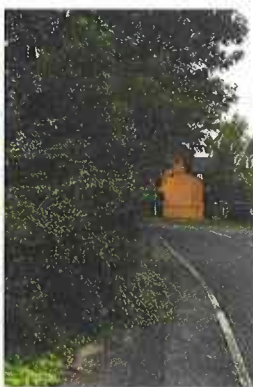
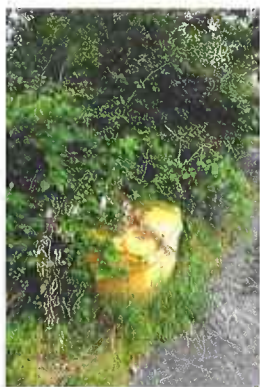
However, on occasion BFPC will undertake work to augment that done by WCC.

If you see our workman out and about wearing this tabard, he will be working on one of these projects for us! Here are some before and after photographs of the work undertaken by Badger Farm Parish Council.



The first photographs are of work done on the corner of Rooksdown Road and Ashbarn Crescent.

We are sure that residents will be pleased with the improvement to the pavement and access to the grit bin.



Welcome

Welcome to our new Badger Farm Parish Council magazine.

We intend publishing twice a year to keep residents up to date with news from the parish council.

The aim is to make it an interesting read that you can all contribute to if you wish.

This will be in addition to our regular contribution to the Community News.

It is hoped that a separate newsletter will give us wider scope to engage on a range of topics.



©2021 Badger Farm Parish Council. While endeavouring to make sure that all published information is accurate, the publishers cannot be held responsible for mistakes or omissions. Reproduction in whole or part of any of the text, illustrations or photography without the express written permission of the publisher is strictly forbidden. The opinions expressed in articles and accompanying literature are strictly those of the authors.

Designed and printed by
TLC Online, 023 8024 3044
www.tlc-online.co.uk

New Team

Following the local elections on 6 May 2021, we have a new team of eight parish councillors, elected to run the parish council in your best interests. Here's the new Badger Farm Parish Council team.



Councillor Julie Lacey
Chairman

27 Wheatland Close, Badger Farm, Winchester.
SO22 4QL



Councillor Fenella Jarvis
Planning

6 Swift Close, Badger Farm, Winchester.
SO22 4QG



Councillor Rhian Dolby
Communications & Estate Management

51 Broad Chalke Down, Badger Farm,
Winchester. SO22 4LR



Councillor Jackie Johnston
Planning

15 Hazel Grove, Badger Farm, Winchester.
SO22 4PQ



Councillor Ali Cochrane
Community Engagement & Sustainability

16 Honeysuckle Close, Badger Farm, Winchester.
SO22 4QQ



Councillor John Godbold
Recreation & Highways

22 Lark Hill Rise, Badger Farm, Winchester.
SO22 4LX



Councillor Sarah McColl
Environment & Biodiversity

7 Roydon Close, Badger Farm, Winchester.
SO22 4PY



Councillor Helen Barlass
Events & Competitions

28 Barley Down Drive, Badger Farm, Winchester.
SO22 4LS

Christine Howe
Clerk & RFO

P.O. Box No. 2419, Fordingbridge.SP6 9BQ
Mobile: 07463 760 801

From the Editor *(continued from front page)*



One of these projects was done within 12 hours of being reported to our workman. You will see that the buddleia is completely blocking the pavement at the junction of Ridgeway and Badger Farm Road, and was considered to be a serious safety concern. We feel sure that residents will be pleased to see the improved visibility for pedestrians. If you have any ideas for areas that could benefit from this one-off project-based work, please contact our clerk.



What is Sustainability?

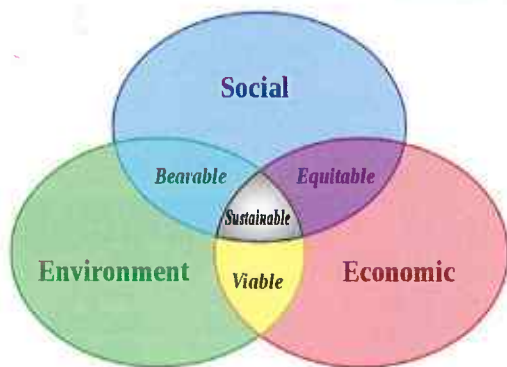
As this edition of the Bugle goes to press, our government is hosting the COP 26 in Glasgow.
<https://ukcop26.org/>

COP stands for Conference of All the Parties and has been held every year since 1995, where the United Nations brings over 190 countries together to talk about climate change.

This seems to be an appropriate time to focus on Badger Farm Parish Council's approach to sustainability.

The key to sustainability lies with us, as individuals and as a community. Together we can play our part to sustain our community, reduce the impact of climate change and enhance the biodiversity of the parish.

We want to know what you would like to concentrate on so that we can all work together to achieve these aims. We will be working collaboratively with other parishes, community groups,



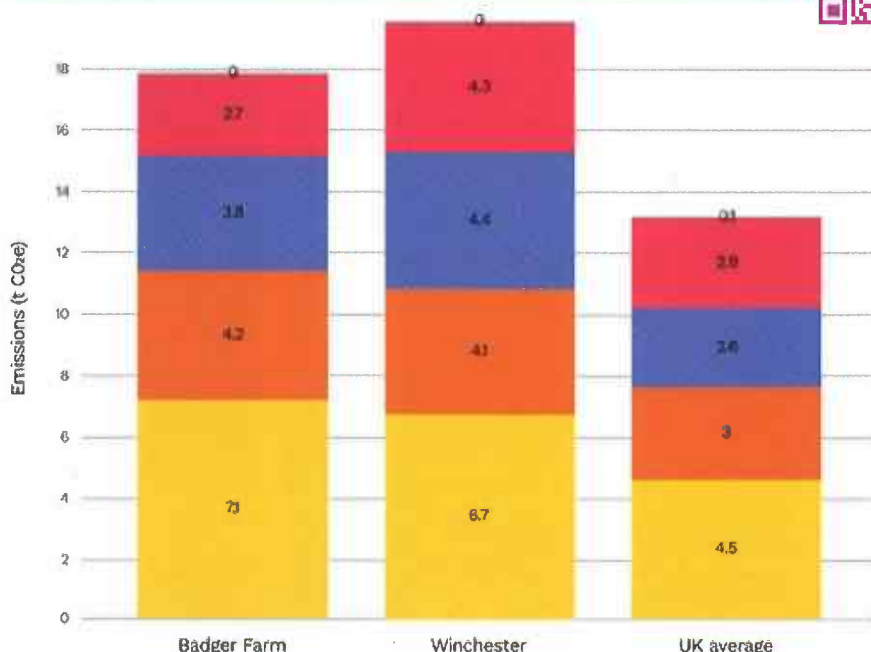
local associations and our residents in projects to improve biodiversity, raise environmental awareness and reduce our carbon footprint.

BFPC recently took part in a survey of the carbon footprint of our parish as part of an initiative by Winchester City Council, the Centre for Sustainable Energy and Winchester Action on Climate Change for Communities.



The results are here

<https://www.winacc.org.uk/wp-content/uploads/2021/07/impact-report-badger-farm.pdf>



Hopefully this will inspire us all to try and reduce our environmental impact. Every step each one of us can take is important.

The most vital part of this is for us all (Councils, Community Groups and most importantly, you, our residents) to work together to do what we can.

There are a lot of things we can do to help:

Try Meat Free Mondays – a reduction in the amount of meat we eat can have a positive impact on our carbon footprint. Why not give a meat free recipe a go? If you can avoid solo trips in the car, please do. Why not lift share with someone?

This has a positive impact on the environment and helps foster strong community links.

Alternatively, why not try the park and ride, walk or cycle in to the city centre. There are numerous street WhatsApp groups in Badger Farm.



These are a great way to get to know your neighbours and share very local information, pass on things you no longer need/re-cycle, meet your neighbours or even organise that lift share.

If a WhatsApp group for your street doesn't exist, why not create one? Lots of these groups were set up in a response to Covid and have proved to be useful community tools.

Try to move away from fast fashion, and try recycling or up-cycling your clothes.

You can give to the charity shops and collection banks or use one of the many

websites that allow you to buy and sell goods locally.

Remember the mantra “reduce, re-use and recycle”?

We can all work on re-using and recycling, but the first part of this concept is really important.

Before you buy something new, have a think if you really need it.

Christmas stockings are a prime place where we buy things for the sake of buying something.

How about including some packets of wild flower seeds in the stocking this year instead of something plastic that will get thrown away by the new year?

With energy prices sky high, even the reluctant environmentalist can see the virtue in using less energy.

Simple things like turning down the

washing machine temperature by 10 degrees can help reduce your energy bill and help the environment.

Try to shop locally and seasonally if you can. There are some good independent shops in both Oliver’s Battery and Stanmore that are within easy reach for our residents.

Turn the tap off whilst brushing your teeth.

This is a simple thing to do and helps save resources and ultimately reduce your water bill too.

Charging points for electric vehicles are increasing and the battery range is improving all the time.

You could also consider installing solar panels, additional insulation or investing in new heat pump system for your home.

Whilst some of these measures are costly, there are circumstances where you can group together to try and effect change. <https://www.winacc.org.uk/why-im-supporting-the-home-energy-retrofit-project/>

If you are interested in joining BFPC Sustainability Group, please contact our councillor responsible for sustainability, Ali Cochrane, through our clerk clerk@badgerfarm-pc.gov.uk



CLlr Jan Warwick HCC subscribe to email list

Hampshire County Councillor | Winchester Downlands
Jan Warwick Community Email List



Residents tell me time and time again that being kept informed about important local matters (before it’s too late to do anything about them) is a top priority.

So that I can communicate with you effectively about local issues please join my community email list.

I promise not to bombard you with emails and will ensure your details are not passed onto anyone or any organisations under any circumstances. To join the list, visit the following link <https://mailchi.mp/fffe77ce8973/cllrjanwarwick>

Hampshire Constabulary says 'Be scam aware'

Have you received a cold call recently about your phone contract? If so, you're not alone.

Hampshire Constabulary have had numerous reports of calls by fraudsters claiming to be from mobile phone retailer Carphone Warehouse and targeting local residents with fraudulent mobile phone contracts.

Please remember:

You should never provide personal or banking details over the phone to someone, even if they suggest they are from a well-recognised retailer, bank or even the police.

Suspicious about a call? Hang up and contact the retailer directly.

You should wait 15 minutes before calling in case the fraudsters have kept your line open.

If you think you have been a victim of crime, including fraud, please report this to Hampshire Constabulary by telephoning 101.



Life in Badger Farm

Don't forget about Badger Farm Parish Council's photo competition.

Get your cameras and phones out and start snapping "Life in Badger Farm".

Entries close 25th April 2022.

Cash prizes of £100 (first prize), £75 (second prize), £50 (third prize) and £50 (under 16 years).

Please see www.badgerfarm-pc.gov.uk for further details or contact the clerk. Here is this year's winning photograph, taken by Will Sinclair.



Road safety

We are aware that traffic speed impacts on the quality of life and safety of our residents.

As you will already be aware, Badger Farm Parish Council has invested in a SAM (smile activated message) sign to raise awareness of our current 30mph speed limit on Badger Farm.

The SAM is moved regularly between different sites within the parish.

Early results show that the average speed recorded is in excess of the 30mph limit.

The SAM has recorded excessive speeds done by some cars which would warrant a six points penalty on a licence or driving ban.

We will be sharing our data with Winchester City Council, Hampshire County Council and the Hampshire Constabulary in an effort to make the parish safer.

Speeding traffic is an issue faced by main local councils.

Indeed, Badger Farm Parish Council has been approached by Twyford Parish



Council in a call to back their campaign to seek a default speed limit throughout Hampshire of 20mph in all residential areas, and where people work and play. This will be discussed at the Hampshire Association of Local Councils AGM on 6 November.

Planning

Please be advised that for the vast majority of Badger Farm there are 'No Permitted Development Rights'.

This is a very unusual position and means that all planning matters, no matter how small, have to go through Winchester City Council Planning Department.

Things like conservatories, garden rooms, sheds, changes to fencing and hedging have to go through the planning process just like the more major planning issues like single and two storey extensions.

Always check with Winchester City Council Planning Department before making any changes or employing builders etc.

We have two councillors who do site visits for planning applications before reporting back to full council. You may get to see them doing their rounds.

Full details of all councillors, along with their photographs, are available on our website and on page two of this newsletter

Wildflower Group end of year report

In October 2021 a study conducted by the Natural History Museum showed that the UK has lost 50% of its biodiversity putting it in the bottom 10% of nations globally. In Badger Farm we are incredibly lucky to have a wide range of native flora and fauna already, however all of our native species can do with a helping hand. In March the Parish Council created three wildflower reserves located by Davis Kickabout, Ashbarn Crescent and The Ridgeway in an effort to preserve and enhance the native plants in those areas. In April a group of volunteers planted some small plug plants of native chalk soil species within the Davis and Ashbarn sites to complement the existing wildflowers. These consisted of Yarrow, Common Knapweed, Wild Carrot, Dropwort, Field Scabious, Oxeye Daisy, Self Heal, Meadow Buttercup, Rough Hawkbit, Bladder

Campion, Primroses and Yellow Rattle.

Surveys of flowers in bloom were conducted in May, June and July by our volunteers (we now have around 15 volunteers on the working group). Once you look closely it is amazing to see the number of different flowers growing right by our footpaths. At the site by David Kickabout alone we recorded 25 different species!

In late August we collected Yellow Rattle seeds from Whiteshute Ridge (with permission of WCC) and these have been scattered across the sites. Yellow Rattle is a native wildflower that is parasitic upon grasses and results in a suppression of grass which encourages greater growth of wildflowers. We are hopeful that allowing the existing flowers to go to seed this year will result in an even better show of wildflowers next summer.



Hawkweed



Bee Orchid



Pyramidal Orchid



Red Clover



Birds Foot Trefoil



If you'd like to get involved in this project or have other ideas to enhance local biodiversity please get in touch with Cllr Sarah McColl cldr.s.mccoll@badgerfarm-pc.gov.uk