



# BADGER FARM PARISH COUNCIL

Newsletter of Badger Farm Parish Council



## Bushfield Camp re-development

The biggest issue facing Badger Farm Parish Council currently is the proposed development of Bushfield Camp.

Our Chairman, Cllr John Godbold has written an update on the proposals:

Following our meeting with residents in June we held a successful follow-up meeting with the developers in July.

The meeting attracted over ninety residents along with councillors from adjacent parishes.

The leader of WCC attended along with an officer from the Planning Department.

Many residents spoke of their concerns over the scale of the proposed development, its effect on transport, and the ecology of the site.

Whilst most residents accepted that there would be some development it was really the scale and use that concerned them.

There were also comments regarding the effect it will have on our infrastructure i.e., water supply and medical facilities.

The next phase will be when developers apply for outline planning permission which will tell us what they really want.

Hopefully, WCC will take on board that there are many residents that do not want a possible white elephant on their doorstep.

The advent of the Solent Free Port with its tax breaks and grants will make Winchester less attractive to prospective users.

If you have any constructive ideas that should be considered, please write to the Parish Council.

We are working closely with the Residents Association and our District and County Councillors.

Cllr John Godbold,  
Chairman

# Welcome

Welcome to the summer edition of the Bugle. We start by announcing that we are now back up to a full complement of councillors, following the co-opting of Catherine Craven. Cllr Craven will join the planning committee, and you may see her accompanying Cllr Jarvis looking at the sites of new planning applications. Welcome Catherine!



**©2023 Badger Farm Parish Council.** While endeavouring to make sure that all published information is accurate, the publishers cannot be held responsible for mistakes or omissions. Reproduction in whole or part of any of the text, illustrations or photography without the express written permission of the publisher is strictly forbidden. The opinions expressed in articles and accompanying literature are strictly those of the authors.

**Designed and printed by  
TLC Online, 023 8024 3044  
[www.tlc-online.co.uk](http://www.tlc-online.co.uk)**

# Our Councillors

The Parish Council meets on the second Monday of each month (excluding August) at 7:30pm in the Bushfield Room at the Community Centre. Please do come along to a meeting to see your council in action.



**Councillor John Godbold – Chairman**

22 Lark Hill Rise, Badger Farm, Winchester.

SO22 4LX

**Mobile: 07711 112 643**

Email: [cllr.j.godbold@badgerfarm-pc.gov.uk](mailto:cllr.j.godbold@badgerfarm-pc.gov.uk)



**Cllr. Helen Barlass**

28 Barley Down Drive, Badger Farm, Winchester, Hampshire. SO22 4LS

**Mobile: 07939 996 703**



**Cllr. Ali Cochrane**

16 Honeysuckle Close, Badger Farm, Winchester, Hampshire. SO22 4QQ.

**Mobile: 07973 836 584**



**Cllr. Catherine Craven**

Email: [cllr.c.craven@badgerfarm-pc.gov.uk](mailto:cllr.c.craven@badgerfarm-pc.gov.uk)



**Cllr. Rhian Dolby - Editor of The Badger Bugle**

51 Broad Chalke Down, Badger Farm, Winchester, Hampshire. SO22 4LR

**Telephone: 01962 864 273**

**Mobile: 07798 554 065**

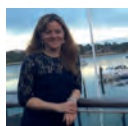


**Cllr. Fenella Jarvis**

6 Swift Close, Badger Farm, Winchester, Hampshire. SO22 4QG

**Telephone: 01962 840 242**

**Mobile: 07753 821 064**



**Cllr. Sarah McColl - Vice Chair**

7 Roydon Close, Badger Farm, Winchester, Hampshire. SO22 4PY

**Mobile: 07876 788 864**



**Cllr. Alex Skinner**

28 Harvest Close, Badger Farm, Winchester, Hampshire. SO22 4DW

**Mobile: 07717 105 072**

**Mrs Christine Howe  
Clerk & RFO**

P.O. Box No. 2419, Fordingbridge. SP6 9BQ

**Mobile: 07463 760 801**

# Tree work on Badger Farm



The Editor invited Winchester City Council's Tree Officer to write a short article for The Bugle explaining the thinking behind the work undertaken, but the offer was declined. However, the Tree Officer did give this information, "There is not much to report other than we are in the process of removing Ash trees that have become colonised with Ash die back before they become too brittle to remove safely.

At the moment we do not have a final plan for replanting, the planning for this is still at an early phase."

If you have any questions or comments on the tree work undertaken you can email Ivan Gurdler, the Tree Officer for Winchester City Council direct on **[IGurdler@winchester.gov.uk](mailto:IGurdler@winchester.gov.uk)**

You may have noticed that several trees have been felled throughout Badger Farm. This has been done following a tree survey by Winchester City Council of all the trees in the parish. We have received comments from members of the public, with some objecting to trees being felled and others complaining that more trees should be felled or cut back considerably.

## Memorial bench

We are pleased to announce that the bench commissioned as a memorial to the late Queen was installed in April.

You can find the bench on the corner of Plough Way. The bench is a fitting tribute to the Queen.

We still intend to install more benches throughout the parish, but further consultation work with residents near proposed sites is needed before this can happen. Badger Farm Parish Council is considering planting a tree to commemorate the coronation



of King Charles III. The tree will be planted in the autumn at the junction of Ridgeway and Meadow Way, where a tree was felled recently.



## Bus stops

The responsibility for the upkeep of the five bus stops in the parish has recently been transferred to the parish council from Winchester City Council.

Badger Farm Parish Council has already undertaken a thorough cleaning of all the bus stops, and we will be looking into further improvements in the future. If you find any problems with any of the bus stops in future, please contact the Clerk.



## Vandalism



We are sad to report that we suffered two serious incidents at the Davis Kickabout.

On the last day of lessons for year 11 pupils, someone set fire to their schoolbooks on the playground. The police and a fire engine were called. The safety surface has suffered some damage.

There was a similar incident the following evening. Although we have had experience of

damage to the playgrounds at this time of the year, it is a worrying turn of events to have to call the police and the fire brigade.

We have also had to replace the wildflower reserve signs (designed by local school children) as they have been vandalised.

It is disheartening to find our attempts to improve our surroundings damaged in this wonton manner.



## Let's tidy Badger Farm!

Hello! We are the Tidy Badger Farm group of friendly volunteers, on a mission to make Badger Farm a litter free zone!

And we welcome anyone who would like to join us – children and adults alike.

We traditionally meet on the second Sunday of each month (weather permitting) at Davis Kickabout for 1 - 1.5 hours. In the winter and spring, our meeting time is 14:30.

From June to September, we sometimes meet later in the afternoon to avoid the heat.

Our latest session was focused on Bushfield Camp, which is an inviting place to walk in peace amongst our lovely flora and fauna.

Most of the volunteers have our own litter-picking equipment (bin bags, pickers and/or bag rings), but we do now have some spare picking

equipment thanks to the Badger Farm Parish Council who recently granted us £270 to buy some new pickers, gloves, bin bags and bag rings.

We lend them on a first-come-first-served basis (as requested before each session).

We would love to welcome new volunteers - if anyone would like to step up to the task.

Please contact Jo, Mike, or James. You can find us on Facebook as the Tidy Badger Farm group or join us on WhatsApp: Tidy BF Pals.

Let's keep Badger Farm tidy, and a lovely place for everyone to enjoy! Jo, Mike, and James



**KEEP  
BADGER FARM  
TIDY**



## Re-cycle Café

The Re-cycle Café is now up and running and recently held another successful session at Badger Farm Community Centre which was attended by the Mayor, Cllr Angela Carter. Cllr Carter watched repairs in action and even joined in some of the repairs herself. The session at Badger Farm Community Centre takes place in the morning, with an afternoon session at Unit 12 in Winnall. You need to book a repair slot in advance of the session.



If you wish to volunteer as a repairer or in whatever other capacity [winchesterrepaircafeuk@gmail.com](mailto:winchesterrepaircafeuk@gmail.com) or visit <https://www.repaircafe.org/en/>



## Lengthsman

Badger Farm Parish Council is not responsible for maintaining the green spaces in the parish. However, we do employ a lengthsman to undertake additional grounds maintenance work in the parish where areas have become very overgrown. One of our councillors recently highlighted this problem in Kestrel

Close and reported it to Winchester City Council. We have also put this area on the list for the lengthsman's next visit too. You can do your bit by reporting overgrown areas to Winchester City Council and you can also let our Clerk know and we may decide to prioritise the area.



Report issues or apply online for many of our Council Services. It takes less than a minute to register to be able to submit and track the progress of enquiries and reports online using Your Winchester online reporting. Register and create your account

to be kept informed, and track progress of, enquiries. Once registered you can report problems 24 hours a day, 7 days a week through our website and also by a free app on smart phones and tablets.



Please visit: <https://www.winchester.gov.uk/apply> or scan the QR Code with your mobile or tablet to visit the page on the Winchester City Council website.



## Carbon Neutrality Action Plan

In June 2019, the council declared a Climate Emergency which included an intention to publish a carbon reduction strategy within 6 months.

The Carbon Neutrality Action Plan (CNAP) was developed to fulfil this pledge.

It was published in December 2019 and adopted in January 2020.

The Carbon Neutrality Action Plan sets the council the very stretching target of reducing carbon emissions from its own activities to reach carbon neutrality by 2024 - and sets the same ambitious goal for the wider district by 2030.

It focuses on measures that reduce emissions from the council's largest emission sources – transport, housing and energy.

Many of the interventions such as electric vehicle charging points, installing PV solar panels on buildings to provide clean energy and improving energy efficiency of homes through retrofit measures are already underway.



The Chat Tea Cafe was started in February 2019 as a free community cafe for the older generation who might be feeling isolated or lonely.

We open once a month on the last Monday between 2.00 - 4.00pm at Badger Farm Community Centre, where you will find us with an abundance of home baked cakes, tea and coffee and a warm welcome to all who come along.

There is no charge to come to the cafe or to enjoy the cake and hot drinks.

If you are interested in coming along, please contact us by email on [info@chat-tea.co.uk](mailto:info@chat-tea.co.uk) or you can pop in the Community Centre and leave us a message with the office.

There is also no expectation other than to enjoy the cake and have a warm drink.

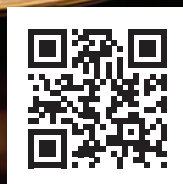
We sometime have guest speakers or live background music.

A beautiful community cafe giving a sense of belonging, chat and a great cake to anyone who might want to drop in.

### Dates for the end of 2023

Monday, generally last Monday of every month except August.. No Cafe in August

- 25th September 2023
- 30th October 2023
- 27th November 2023
- 18th December 2023



Our next meeting is on **Monday 11th September**, at **7.30pm** at **Badger Farm Community Centre**.

Please do come along and join our meeting. You can also contact us via the Clerk, see inside cover for details.

We hope you enjoy a lovely summer.